

SPS SOHO+

Line-interactive 750 VA - 2250 VA UPS with double USB charger

SPS SOHO+: Safe and stable power for your IT and office equipment

The **SPS SOHO+** series from Salicru is a range of Uninterruptible Power Supply (UPS) systems that guarantee a stable and uninterrupted power supply, combining high reliability, energy efficiency, and smart management. They incorporate Line-interactive topology with AVR (Buck/Boost) that automatically stabilises the input voltage, reducing battery usage and extending their service life, while ensuring compatibility with APFC loads for modern IT equipment.

Two practical front USB ports (type A and C) provide fast charging for mobile devices. They also have intuitive LED bars (on the front) that allow you to quickly identify the equipment's operating mode. Available in five different power ratings (750 VA, 900 VA, 1250 VA, 1650 VA and 2250 VA), the series offers the flexibility to choose between Schuko or IEC connectors for a perfect fit in any installation.

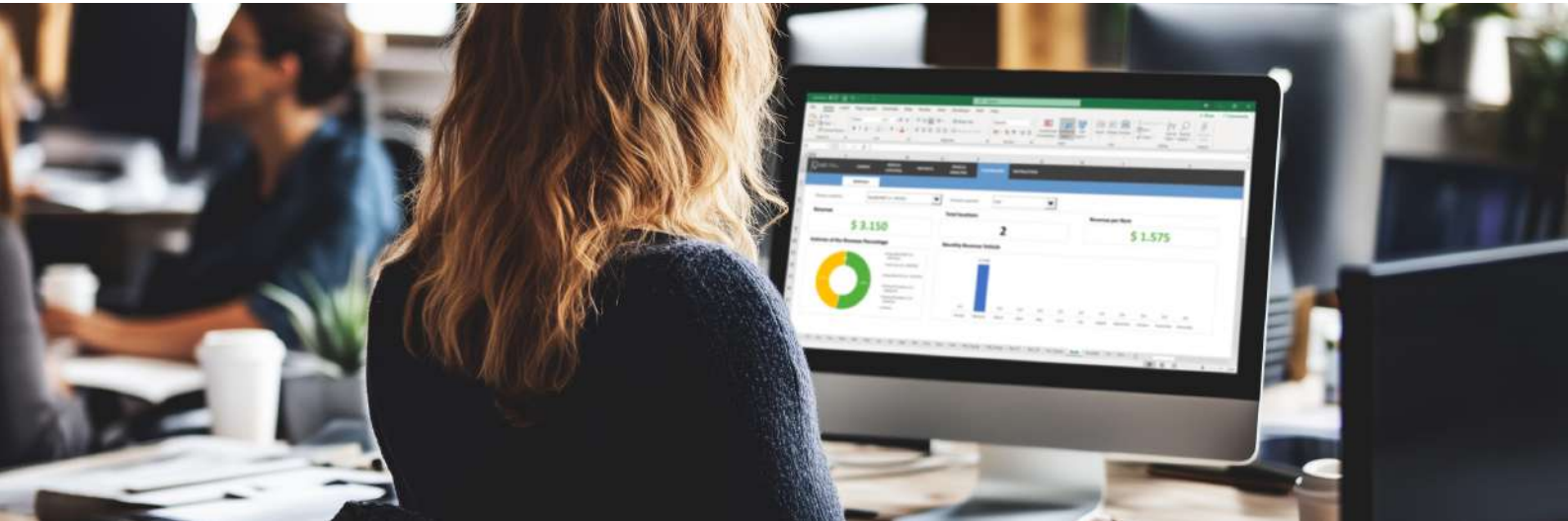
It also features a USB interface with HID protocol, allowing for direct system control, configuration of operational settings and the capability to automatically shut down or hibernate the computer in the event of a mains failure. Additionally, it comes with management and monitoring software that is compatible with all major operating systems, which makes it easy to monitor the UPS status and customise its operating parameters.



Applications: Electrical protection to prevent disruptions to your business

The UPS devices in the **SPS SOHO+ series** from Salicru offer the perfect protection for IT and office equipment, whether for individual workstations (design, communication, etc.) or small networks with servers. They guarantee a stable and secure power supply at all times.

In addition, their design features two convenient front USB ports for easy charging of mobile devices, making them an ideal choice for shops and businesses, freelancers and professionals, small offices and co-working spaces, as well as franchises and distributors.



SALICRU

Features

- Line-interactive technology
- Permanent AVR stabilisation (buck-boost)
- Tower format
- Control panel with LCD display and keypad
- Compatibility with APFC loads
- USB interface with HID protocol
- Easy battery replacement
- IEC and Schuko sockets
- 2 x USB chargers
- LED indicators
- ON/OFF button
- Management software
- Master-Slave (1250 to 2250 VA models only)



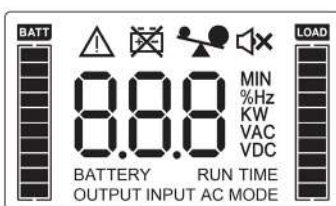
Dual USB charger on the front

The device is equipped with two front USB ports, one USB-C and one USB-A, allowing for fast and convenient charging of mobile devices such as smartphones, tablets or electronic accessories without the need for additional adapters.



Display

The UPS is equipped with a backlit display that provides a clear and detailed view of its operating status at all times. It displays essential information such as the available battery level, the percentage of charge connected, the input and output voltage, as well as the operating mode: normal, AVR mode (automatic voltage stabilisation) or battery mode (in the event of a power failure). It also notifies you of any faults in the unit or other incidents, enabling quick and efficient management.



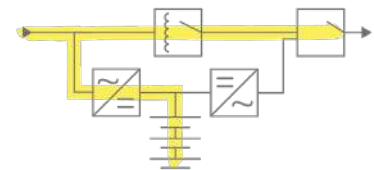
Master-Slave connections

The UPS' Master-Slave connections (1250 VA to 2250 VA models only) support smart control of power consumption, automatically shutting down secondary devices when the main UPS shuts down. This optimises energy efficiency, reduces operating costs and extends the life of connected equipment. The function can also be easily disabled if not required, offering additional flexibility to suit your needs.



Line-interactive technology

The system features an automatic voltage regulator (AVR) (Buck/Boost), which compensates for variations in the mains supply without resorting to the battery. This not only stabilises the power supply, but also extends the battery life and ensures optimum backup when you need it most.



USB interface with HID protocol

The device features a USB port with HID protocol, enabling quick setup and precise control of the system. In addition, it has an automatic shutdown or hibernation function in the event of a power failure, ensuring system continuity. Monitoring software compatible with virtualised environments is also included for advanced, real-time management (please visit the website to obtain support software).

Range

Schuko MODEL	CODE	POWER (VA / W)	NO. OUTPUTS	DIMENSIONS (D x W x H mm)	WEIGHT (kg)
SPS 750 SOHO+	647EA000001	750 / 420	4	287 x 99 x 320	6,5
SPS 900 SOHO+	647EA000002	900 / 510	4	287 x 99 x 320	7,5
SPS 1250 SOHO+	647EA000003	1250 / 720	4	410 x 99 x 320	10,1
SPS 1650 SOHO+	647EA000004	1650 / 900	4	410 x 99 x 320	11,8
SPS 2250 SOHO+	647EA000005	2250 / 1200	4	410 x 99 x 320	12,5

IEC MODEL	CODE	POWER (VA / W)	NO. OUTPUTS	DIMENSIONS (D x W x H mm)	WEIGHT (kg)
SPS 750 SOHO+ IEC	647EA000006	750 / 420	6	287 x 99 x 320	6,5
SPS 900 SOHO+ IEC	647EA000007	900 / 510	6	287 x 99 x 320	7,5
SPS 1250 SOHO+ IEC	647EA000008	1250 / 720	6	410 x 99 x 320	10,1
SPS 1650 SOHO+ IEC	647EA000009	1650 / 900	6	410 x 99 x 320	11,8
SPS 2250 SOHO+ IEC	647EA000010	2250 / 1200	6	410 x 99 x 320	12,5

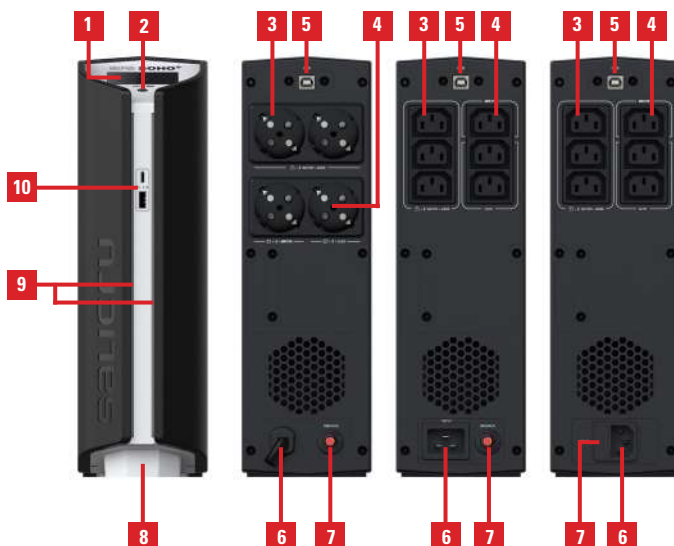
Dimensions



SPS 750-900 SOHO+ (IEC)

SPS 1250-2250 SOHO+ (IEC)

Connections



1. LCD screen.
2. Buttons.
3. Battery sockets + surge protector.
4. Battery sockets MASTER/SLAVE + surge protector.
5. USB-HID port.
6. AC input.
7. Input protection via thermal fuse or standard fuse depending on the model.
8. Battery cover
9. LED indicators.
10. USB C ports (top) and USB A (bottom).

Technical specifications

		SPS SOHO+
TECHNOLOGY		Line - interactive
FORMAT		Tower
INPUT	Rated voltage	230 V
	Voltage range	170-280 V
	Stabiliser	AVR (Buck & Boost)
	Rated frequency	50 / 60 Hz (auto-detection)
	Protection	Resettable breaker ÷ Fuse
OUTPUT	Rated voltage	230 V
	Voltage accuracy (battery mode)	±10%
	Waveform (battery mode)	Pseudosenoidal
	Frequency	50/60 Hz (same as input)
	Frequency accuracy (battery mode)	±1 Hz
	Compatibility with APFC loads	Yes
	Socket type	Schuko / IEC
BATTERY	Protection	Against deep discharge and overload
	Battery type	Pb-Ca sealed, AGM, maintenance-free
	Recharge time	6-8 hours to 90%
COMMUNICATION	Ports	USB (HID protocol)
	Monitoring software	For Windows, Linux and Mac
INDICATIONS	Type	LCD + LED
	Operating modes	Normal / Stabilisation (AVR) / Battery / Standby
OTHER FUNCTIONS	Cold-start (start-up from batteries)	Yes
	Master - Slave	Yes ⁽¹⁾
	Automatic restart	Yes
USB CHARGER	Quantity	2
	Voltage	5 V
	Maximum current	2.1 A
GENERAL	Operating temperature	0°C ÷ +40°C
	Relative humidity	Up to 90%, no condensing
	Maximum operating altitude	2000 m.a.s.l.
	Acoustic noise at 1 metre	<40 dB ÷ <45 dB
STANDARDS	Safety	IEC 62040-1
	Electromagnetic compatibility (EMC)	IEC 62040-2
	Operation	EN-62040-3
	Corporate certifications	ISO 9001, ISO 14001, ISO 45001

Information subject to change without notice.

(1) 1250 to 2250 VA models only

